



1090 Union Road, Suite 280
West Seneca, NY 14224

T 716.204.9543
TRCcompanies.com

July 28, 2020

From: Brian Stoos
102 West State Street
Ithaca, NY 14850
BStoos@trccompanies.com
315.679.6781

To: Mr. Bruce Weber
Planning/Zoning Officer
3577 Terrace Road
Cortland, NY 13045

Re: Cipriani Energy Group
Tower Solar Power Facility Project
Cortlandville, Cortland County, NY

Dear Mr. Weber,

Cipriani Energy Group – Sol Real Group is proposing to construct the Tower Solar Project (Project), a proposed 3.0-megawatt (MW) alternating current (AC) solar photovoltaic (PV) project located in the Town of Cortlandville, Cortland County, NY. The Project is located on a single parcel at 1585 Tower Road (Figure 1). Battery storage is not proposed for this Project. The Project will be developed within an area totaling 17 acres. The preliminary sketch plan is shown in Figure 2. It is important to note that the Project Site does not contain prime farmland soil classifications as defined by the Natural Resource Conservation Service (Figure 3).

If you have any questions, please contact me at 315.679.6781 or via email at BStoos@trccompanies.com.

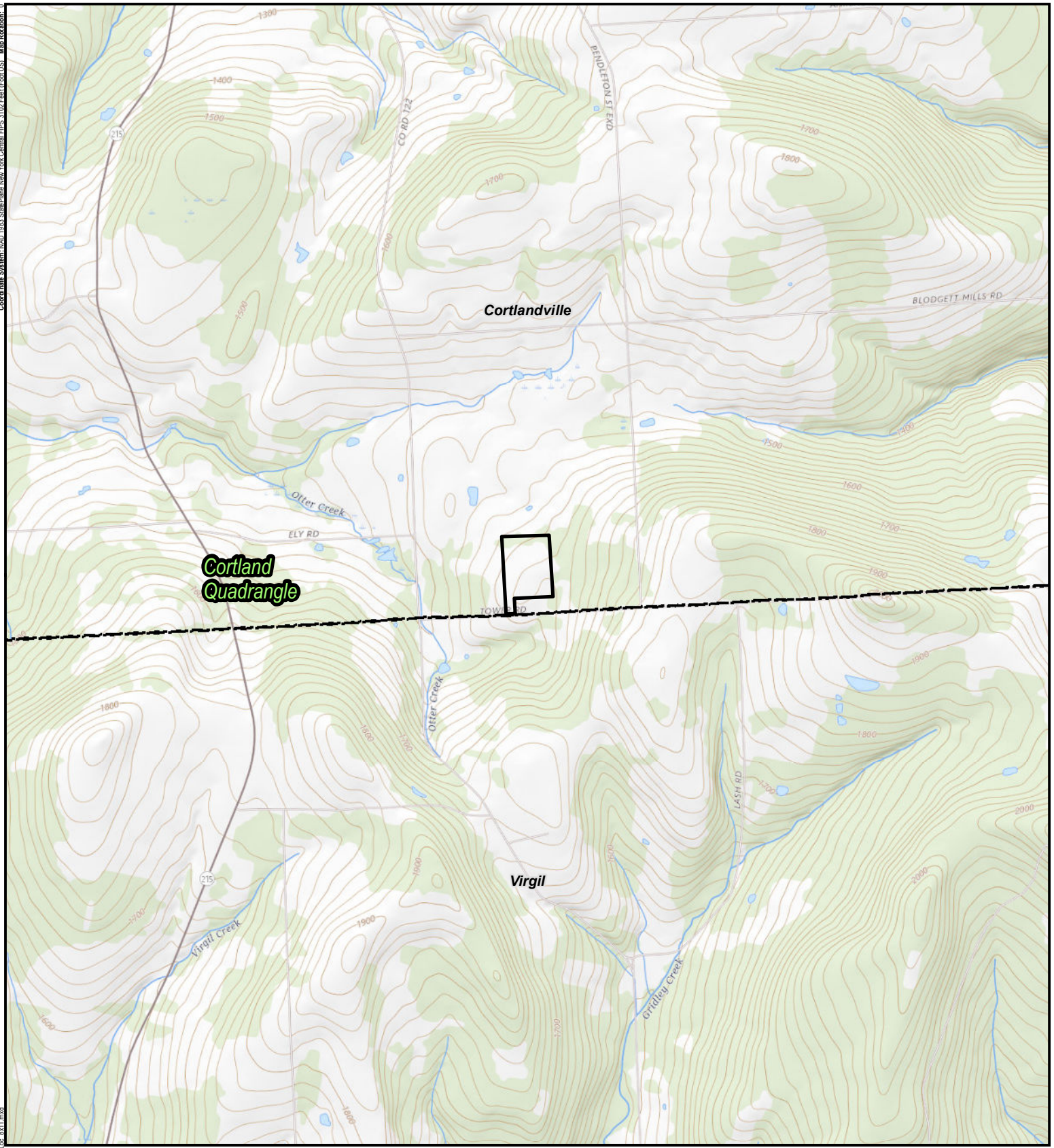
Sincerely,

A handwritten signature in black ink that reads "Brian Stoos". The signature is stylized and cursive.

Brian Stoos
Environmental Permitting Project Manager – TRC

Figures: Figure 1. Site Location Map
 Figure 2. Preliminary Sketch Plan
 Figure 3. Farmland Soils Classification Map

Coordinate System: NAD 1983 StatePlane New York Central FIPS 3102 Feet (Foot US) Map Resolution: 0
Path: Z:\PROJECTS\Cipriani_Energy\395300_Cortland\Cortland_Engt_Site_Location.mxd Loc: 8x11.mxd



LEGEND

- SITE BOUNDARY
- USGS 24K QUAD
- TOWN BOUNDARY

1:24,000

1" = 2,000'

0 1,000 2,000 Feet

1. BASEMAP IMAGERY FROM USGS TOPOGRAPHIC NATIONAL MAP BASEMAP.

PROJECT: **CIPRIANI ENERGY TOWER SOLAR PROJECT**
CORTLANDVILLE, CORTLAND COUNTY, NY

TITLE: **SITE LOCATION MAP**

DRAWN BY: A. KAILAS PROJ NO.: 395300

CHECKED BY: B. ROONEY

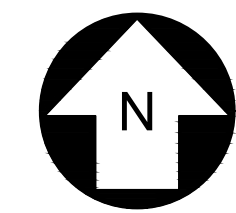
APPROVED BY: B. STOOS

DATE: JUNE 2020




FIGURE 1

TRC
10 MAXWELL DRIVE
CLIFTON PARK, NY 12065

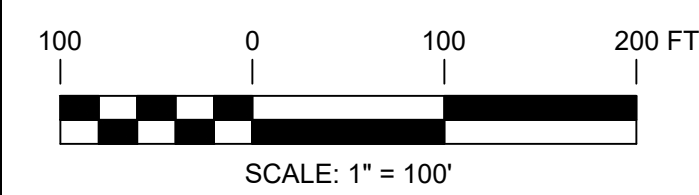
CIPRIANI ENERGY GROUP



LEGEND

-  SETBACK
-  FIELD DELINEATED WETLAND
-  SLOPES 12% AND STEEPER

TOPOGRAPHIC INFORMATION WAS COLLECTED FROM U. S. GEOLOGICAL SURVEY (USGS) AND IS BASED ON NAVD88 VERTICAL DATUM.



249 Western Avenue
Augusta, ME 04330

PROJECT NO: 395300

REFERENCE ITEMS	REV	DESCRIPTION	DATE	DES	CHK	APP
	-		-	-	-	-
	-		-	-	-	-
	-		-	-	-	-
	-		-	-	-	-

CMW DESIGNED	
CMW DRAWN	
PMM CHECKED	
APPROVED	
REVIEW 1	06/24/20
REVIEW 2	DATE
	1" = 100'
	SCALE

CORTLAND SOLAR ENERGY FACILITY
CIPRIANI ENERGY GROUP

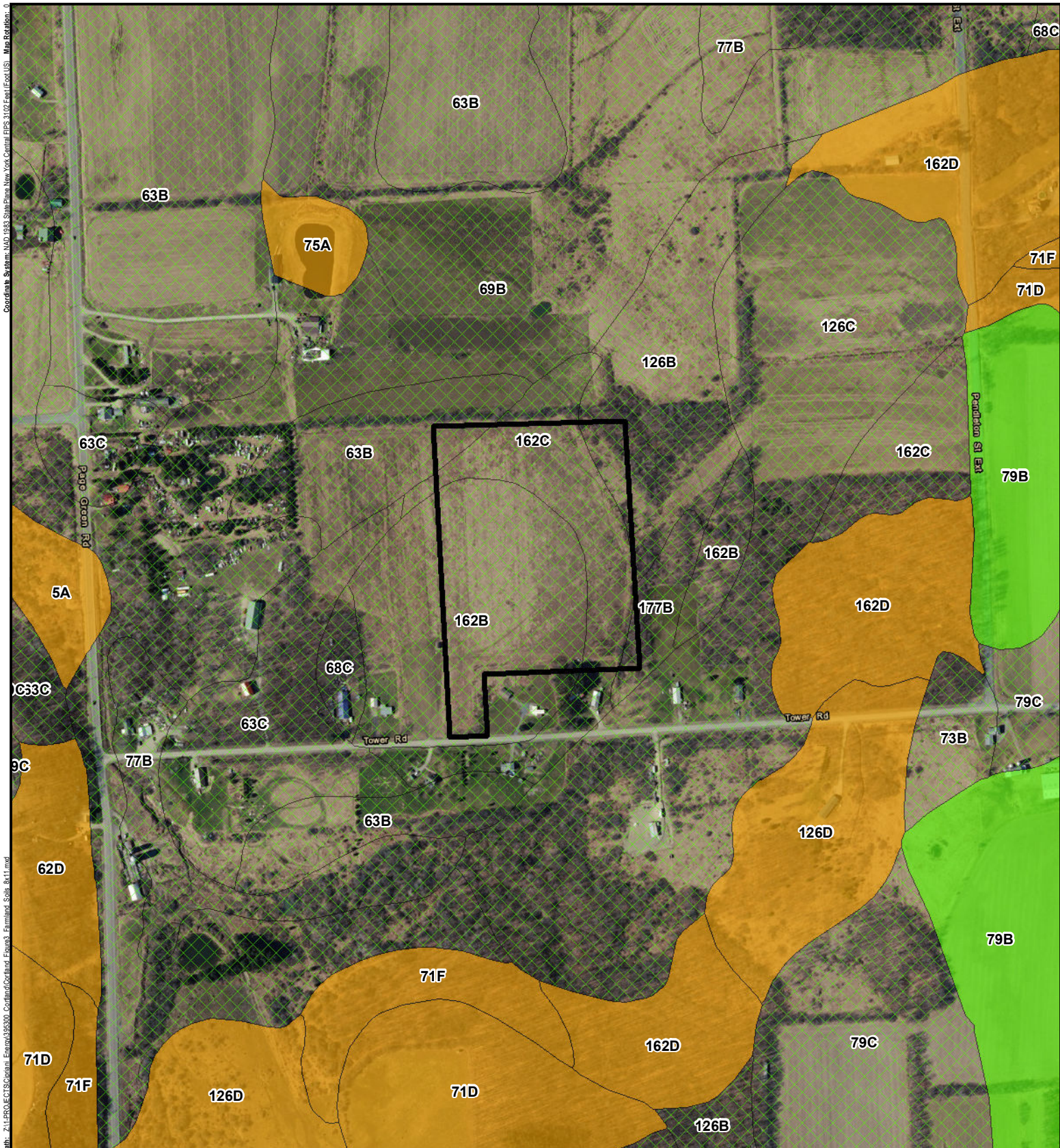
CONCEPTUAL ARRAY LAYOUT PLAN NEW YORK

CORTLAND

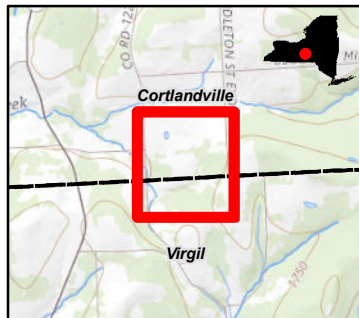
TRC

SK-01

REV. ---



Path: Z:\PROJECTS\Cortlandville\Energy\395300_Cortlandville\Cortlandville_Energy3_Farmland_Soils_8x11.mxd
 Coordinate System: NAD_1983_StatePlane_NewYork_Central_FIPS_3102_Feet (Foot US) Map Rotation: 0



LEGEND

- NOT PRIME FARMLAND
- PRIME FARMLAND IF DRAINED
- FARMLAND OF STATEWIDE IMPORTANCE
- ALL AREAS ARE PRIME FARMLAND
- SITE LOCATION

1. BASEMAP IMAGERY FROM
ESRI/NAIP "WORLD IMAGERY"
WEB BASEMAP SERVICE LAYER, 2018.

2. SOILS DATA ACQUIRED FROM THE
NATURAL RESOURCES CONSERVATION SERVICE,
USING THE UNITED STATES DEPARTMENT
OF AGRICULTURE WEB SOIL SURVEY.

1:6,000
1" = 500'
0 250 500
Feet

PROJECT: CIPRIANI ENERGY TOWER SOLAR PROJECT CORTLANDVILLE, CORTLAND COUNTY, NY	
TITLE: FARMLAND SOILS CLASSIFICATION MAP	
DRAWN BY: A. KAILAS	PROJECT NO.: 395300
CHECKED BY: C. PEARCE	
APPROVED BY: B. STOOS	
DATE: JULY 2020	
 215 GREENFIELD PARKWAY LIVERPOOL, NY 13088	FIGURE 3 Distributed Energy